

TECHNICAL DATA

Furnace Tracker®

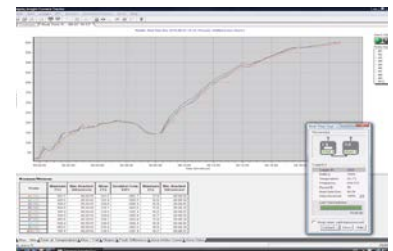
Real-Time Temperature Data Directly from Inside Your Furnace Process

The Datapaq TP6 radio telemetry system utilizes high temperature radio-frequency technology to allow data transmission from the data logger in real time. As the system travels through the process, product and process temperature data can be viewed, analyzed and reported instantaneously. This technology can be applied to monitoring key thermal processes in most industrial heating applications.



System Features

- The radio telemetry system can be tailored to meet your specific process requirements:
 - Batch process(es) – simple primary receiver kit
 - Conveyorized processes – primary receiver complemented with add-on secondary receivers
- Automatic frequency selection from software, minimizing interference and maximizing signal quality
- Intelligent listen-before-transmit feature enables the system to operate with multiple loggers on the same transmitting frequency and data collection with one installation of Insight™ software
- Receivers connected in series with low-loss RS485 digital communications bus, maximizing data reception
- Comprehensive on screen, real time system diagnostics reporting signal status for each transmitting logger and receiver
- Transmission performance optimized for high-temperature operation with internal self-calibration routines
- Ultra low power consumption extends battery life and operating life
- In-logger data storage backs up transmitted data, ensuring integrity of data



Real time data capture



TM21 primary receiver Kit

Features and Benefits

Rapid QA – know that your product has been thermally processed to specification before the system has even exited the process

Improve the productivity of any batch process – know when critical product temperature has been achieved and allow the process to be completed or moved on to the next phase; optimize cycle times with confidence

Rapid fault-finding – see immediately when process problems are being experienced without having to wait until the completion of the process; allow corrective action earlier, saving time and reducing possible scrap

Improve efficiency of process optimization – use live data to view the effect of any process-parameter changes on the temperature profile instantly

Technical Specifications

TM21 Transmitter (TX1401)

Transmitter fitted inside data logger

TP6 logger range	10 or 20 channels, type K, N, R, S, B 70 °C & 110 °C (158 °F to 230 °F)	
Operational frequency ranges*	Europe/China	434.065–434.740 MHz
	USA/Canada	463.525–463.975 MHz
	Japan	429.275–429.725 MHz
Operating temperature range	–20 °C to 110 °C / –4 °F to 230 °F	
Transmission range	200 m (656 ft) "in open field conditions"	
Max number of transmitters per system	6	
Sampling interval range	2 sec to 50 min	
Interleaving limits	10	
Approvals*	EU CEPT/ERC/70-03E	Canada RSS-119
	USA FCC CFR 47 Part 90	Taiwan NCC-LP0002
	Japan ARIB STD-T67	China CMT-2010DJ5117

* Contact Fluke Process Instruments for availability of telemetry/Bluetooth in your country.

TM21 Primary Receiver (Europe RX4200, USA RX4100, Rest of world RX4000)

Primary receiver with integral USB comms to PC. Powered by CH0070. Equipped with type N RF connector.

Dimensions (H x W x L)	44 × 139 × 98 mm / 1.7 x 5.5 x 3,9 in
Frequency	To match transmitter
Antenna	Desktop 15 cm
Operating temperature	0 °C to 50 °C / 32 °F to 122 °F
Status display	2 line 16 character backlit LCD

TM21 Secondary Receiver (Europe RX4201, USA RX4101, Rest of World RX4001)

Secondary receiver connected to the TM21 primary receiver with RS485 communication cable (10 to 100 m / 32 to 328 ft).

Dimensions (H x W x L)	44 × 139 × 98 mm / 1.7 x 5.5 x 3,9 in
Frequency	To match transmitter
Antenna	Unity gain end feed with type N connector
Operating temperature	0 °C to 50 °C / 32 °F to 122 °F
Status display	Single power and status LED
Maximum quantity	Max 6 secondary connected to 1 primary receiver

Insight Software

- Automatic frequency selection and set-up
- Real time tool detailing quality of data transmission for each logger / receiver and system status information
- Real-time analysis of process data and review against process set-up (zones, temperature set-points, overlays)
- Event markers log events at the precise point they happen on the profile
- Automatic data-saving to PC to guarantee data

Fluke Process Instruments

Americas

Everett, WA USA
Tel: +1 425 446 6780
sales@flukeprocessinstruments.com

EMEA

Cambridge, UK
Tel: +44 1223 652 400
sales@flukeprocessinstruments.co.uk

China

Beijing, China
Tel: +86 10 6438 4691
sales@flukeprocessinstruments.com.cn

Asia East and South

India Tel: +91 22 2920 7691
Singapore Tel: +65 6799 5596
sales.asia@flukeprocessinstruments.com

Worldwide Service

Fluke Process Instruments offers services, including repair and calibration. For more information, contact your local office.

www.flukeprocessinstruments.com

© 2021 Fluke Process Instruments
Specifications subject to change without notice.
1/2021 TP6 RPT_DS_RevA



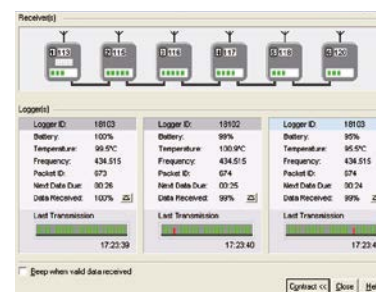
Datapaq TP6 data loggers



Primary receiver



Frequency scanner



Insight Software